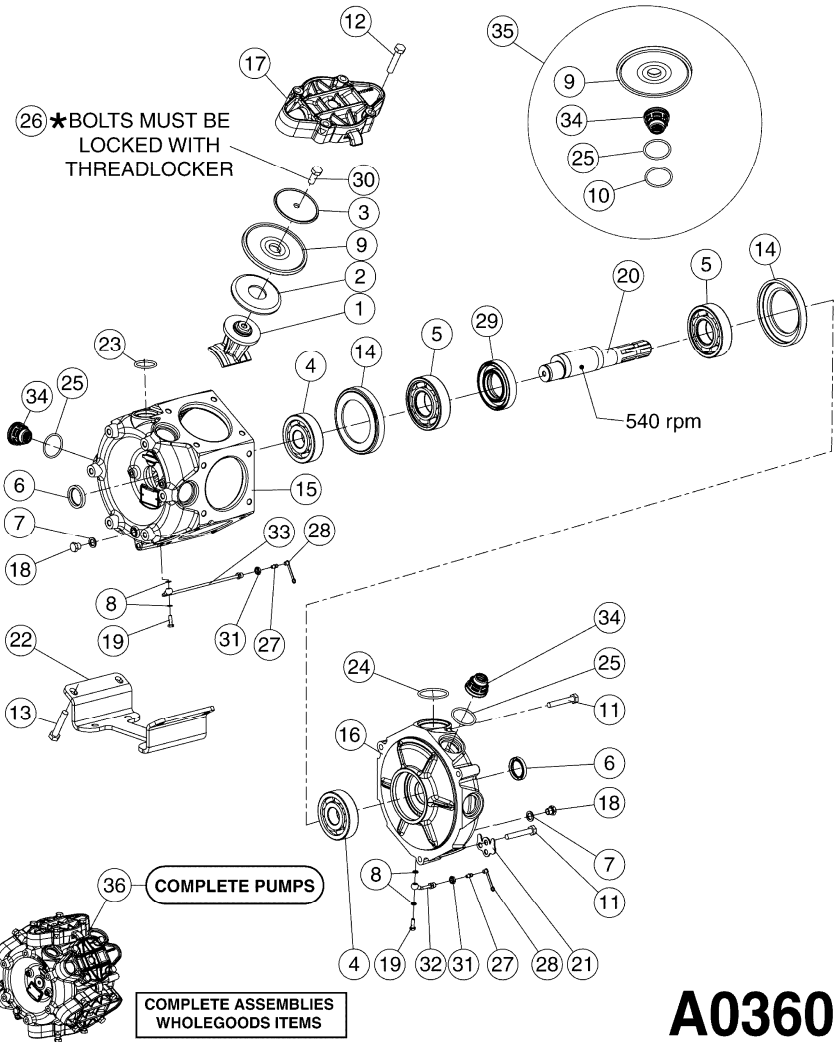


Pos.	parts-n°	order qty	description
1	111623	1	CONROD 463-10 MACH.
2	161012	1	PRESSURE SHOE FOR 463 PUMP
3	161175	1	DRAW SHOE 463 STAINLES ST
4	210221	1	BEARING - 361 PUMP
5	210232	1	BEARING 361
6	210243	1	OIL SEALING RING 35x47x7
7	241404	1	DOWTY SEAL 1/4"
8	242374	1	WASHER Ø10/ø6X1 COPPER
9	242426	1	DIAPHRAGM PUMP 463/464 NITRIL
10	242510	1	O-RING D44.04 X 3.53 NITRIL
11	421072	1	MACH.SCREW M10X65 DIN931-
12	430312	1	MAS.SCREW WITH 12X60 ....
13	430438	1	SCREW HEX 8.8 DEL M12X65
14	11171900	1	CONROD RING 364/464 MACHINED
15	11172200	1	PUMP HOUSE 464 MACHINED 5/4" BSP RED
16	11172600	1	FRONTPART 464 MACHINED 2" BSP RED
17	11173000	1	VALVE COVER.463/464 MACHINED RED
18	14010400	1	HY STOPPER 1/4'' SS
19	14120400	1	BANJOBOLT M6 X 19
20	14137600	1	CRANKSHAFT 364/464-10 CRANKSHAFT FOR HOT PUMPS
20	14137700	1	CRANKSHAFT 464-12 CRANKSHAFT FOR COLD PUMPS

**A0360**



**A0360**

Pos.	parts-n°	order qty	description
21	16383000	1	GREASE NIPPLE PLATE 464
22	16410800	1	PUMP BASE 463/464 BLACK
23	24266600	1	O-RING D 38,0 X 4,0 70SH.NITR
24	24266800	1	O-RING D 54,0 X 4,0 70SH.NITR
25	24272100	1	O-RING Ø 44,04 X 3,53-SH90 NITR
26	28045503	1	LOCTITE 262 .5ML (.017oz.)
27	28163300	1	GREASE NIPPLE H1 M6X1 DIN 7412
28	28163400	1	CAP F. GREASENIPPLE YELLOW M6X1
29	33527200	1	GREASE SPLIT 364/464
30	43099200	1	BOLT, SET M12 X 30 DIN933 A4
31	46134000	1	NUT HEX M10x1 H=2.3 NV=14 ELZIN
32	61097000	1	BANJOTUBE SHORT 464 COMPL.
33	61097100	1	BANJOTUBE LONG 464 COMPL.
34	72043600	1	VALVE D46 M. GF O-RING VALVE FOR COLD PUMPS
34	72094700	1	VALVE D46 STAINLESS SPEC.FLAP VALVE FOR HOT PUMPS
35	74005703	1	PUMP KIT-463/464 HOT DEICER, SS
36	82168400	1	PUMP 464-10/2"SU./HOT-DEICER